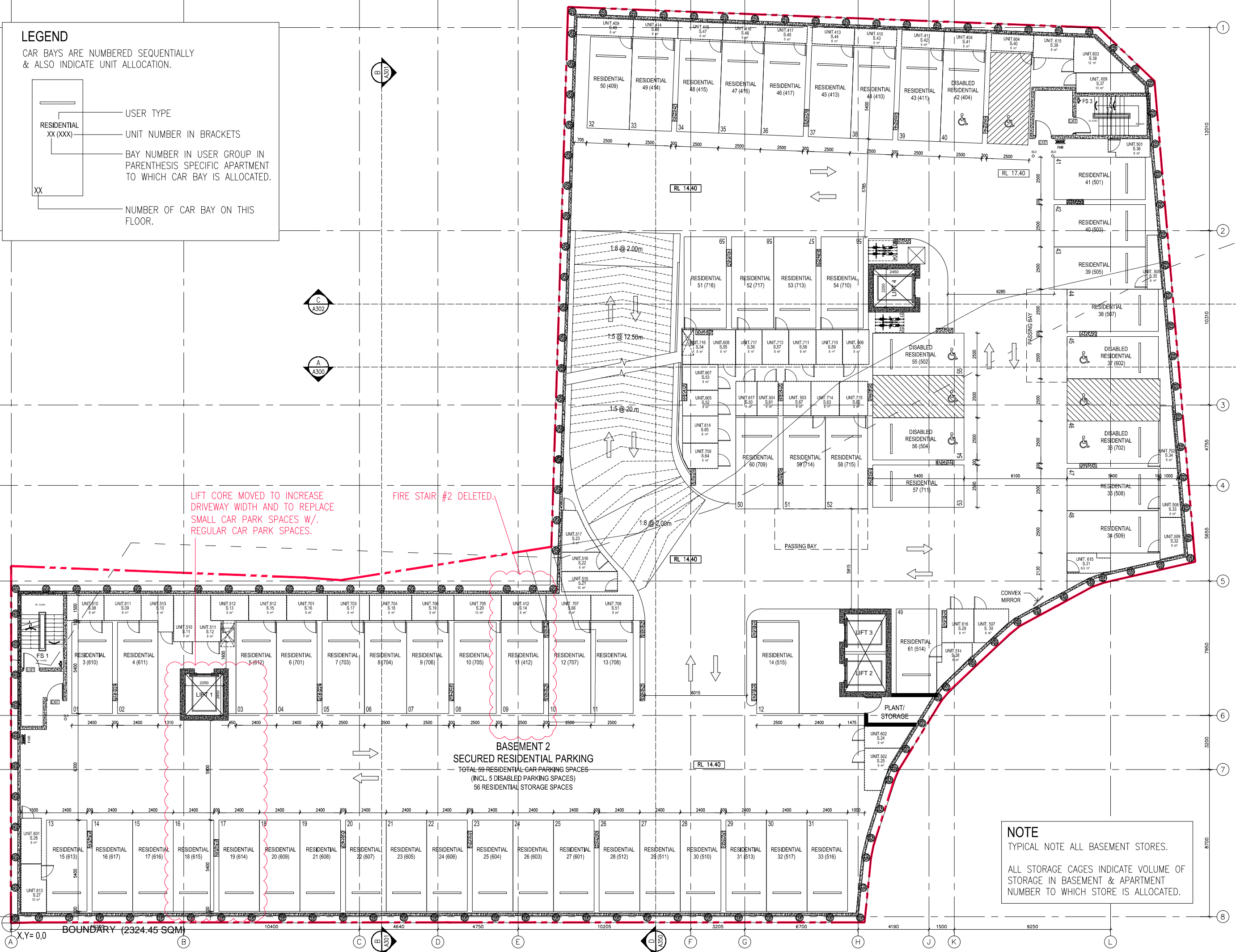
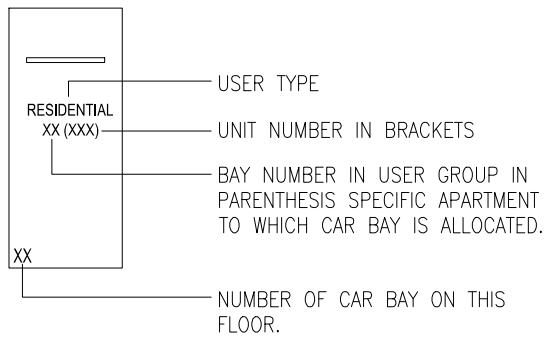


## LEGEND

CAR BAYS ARE NUMBERED SEQUENTIALLY  
& ALSO INDICATE UNIT ALLOCATION.



Rev.	Description	Date
A	DA SUBMISSION	03.10.14
B	DA RE-SUBMISSION	27.04.15
C	DA ADDITIONAL INFORMATION	09.10.15

DISCLAIMER  
"THESE DRAWINGS ARE PRELIMINARY DRAWINGS AND ARE SUBJECT TO CHANGE WITHOUT NOTICE DURING THE COURSE OF THE PROPOSED DEVELOPMENT AND IN CONSULTATION WITH COUNCIL. SUBMISSION OF THE DRAWINGS DOES NOT CONSTITUTE A REPRESENTATION OR WARRANTY BY THE DEVELOPER OR ITS SERVANTS, AGENTS OR CONTRACTORS THAT THE DRAWINGS ARE FINAL NOR THAT THE PROPOSED DEVELOPMENT WILL TAKE PLACE IN ACCORDANCE WITH THESE DRAWINGS."

NOTES:  
DRAWINGS MADE TO A LARGER SCALE AND THOSE SHOWING PARTICULAR DETAIL OF WORKS SHALL TAKE PRECEDENCE OVER DRAWINGS MADE TO A SMALLER SCALE AND FOR MORE GENERAL PURPOSES.  
WHERE ANY DISCREPANCY EXISTS BETWEEN FIGURED AND SCALED DIMENSIONS, THE FIGURED DIMENSIONS SHALL PREVAIL.  
BUILDER TO CHECK ALL SITE DIMENSIONS PRIOR TO FABRICATION OF FITTINGS.

THESE DOCUMENTS AND ANY WORKS EXECUTED AS A RESULT OF THESE DOCUMENTS SHALL BE SUBJECT TO THE COPYRIGHT CONDITIONS SET OUT IN THE CONDITIONS OF ENGAGEMENT.

TONY OWEN PARTNERS  
FOR DA SUBMISSION  
OCTOBER 2014

Consultants

Client

Architects

Project:

VILLAWOOD

Project address:

1 Villawood Place, Villawood

Key plan

Scale:

1:100 @ A1

Date:

09/10/15

Drawing title:

BASEMENT 2 PLAN

Project no. 923 Dwg #. A101

Drawn: WT REV. C

Drawing status:

FOR INFORMATION